

DBA Security Advisor is security tool that can assess one or multiple SQL Server® instances against a rich set of security checks and provide recommendations as well as remediation methods and scripts for the detected security risks. All the security checks and recommendations are based on proven security best practices which can help you secure your SQL Server® instances and thus protect your data more efficiently. DBA Security Advisor can be part of your ongoing systems' hardening process focusing on assessing the configuration of your SQL Server® instances.

7 Categories with more than 30 Security Checks*:

- Server-Level Accesses
- Surface Area
- Authentication & Authorization
- Password Policies
- Auditing
- Miscellaneous
- Advanced

* In the Community Edition, only a limited set of security checks is available.

Robust Instance Assessment

- **Connect and Assess a Single SQL Server® Instance**
 - Available in all Editions
- **Connect and Assess Multiple SQL Server® Instances**
 - Available in Enterprise Edition
 - Suitable for large enterprise environments with multiple SQL Server instances

Report History

- Available in Enterprise Edition
- When enabled, each generated report is stored on disk for future reference. You can browse and view old reports via DBA Security Advisor.

Connected Instance(s) Info

- Available in Enterprise Edition
- Generates a report with basic information for each connected instance.

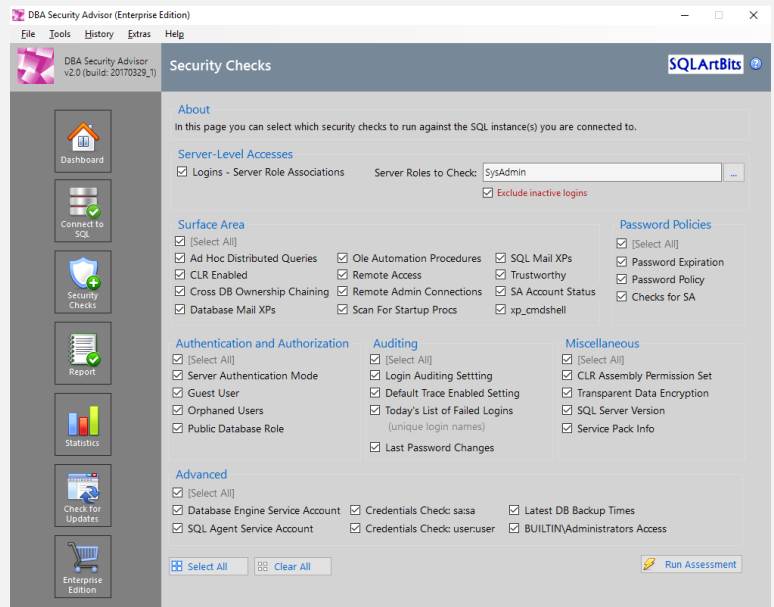


Figure 1: Security Checks Page (Enterprise Edition).

DBA Security Advisor provides a rich set of security checks which can help you assess the configuration of your SQL Server® instances and detect possible security risks, based on proven security best practices.

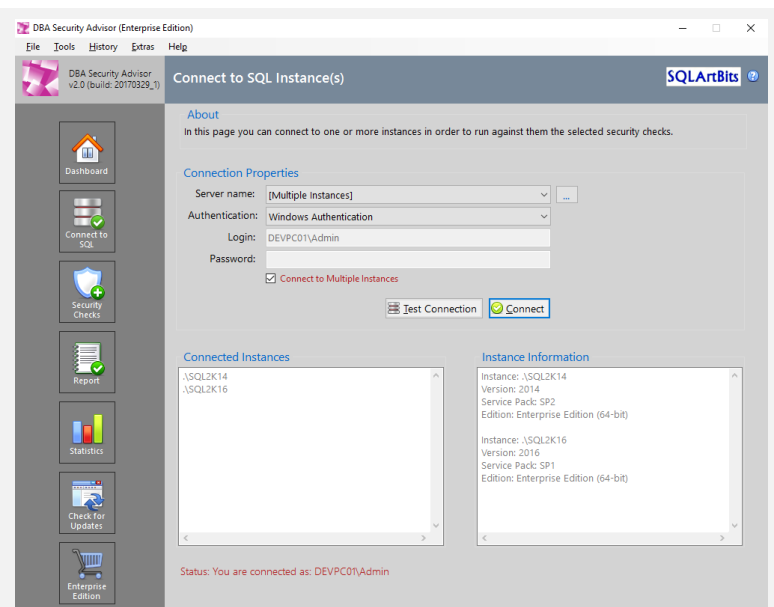


Figure 2: Connect to Multiple SQL Server® Instances (Enterprise Edition).

In the Enterprise Edition of DBA Security Advisor, you can connect to multiple SQL Server® Instances and assess them against a rich set of security checks.

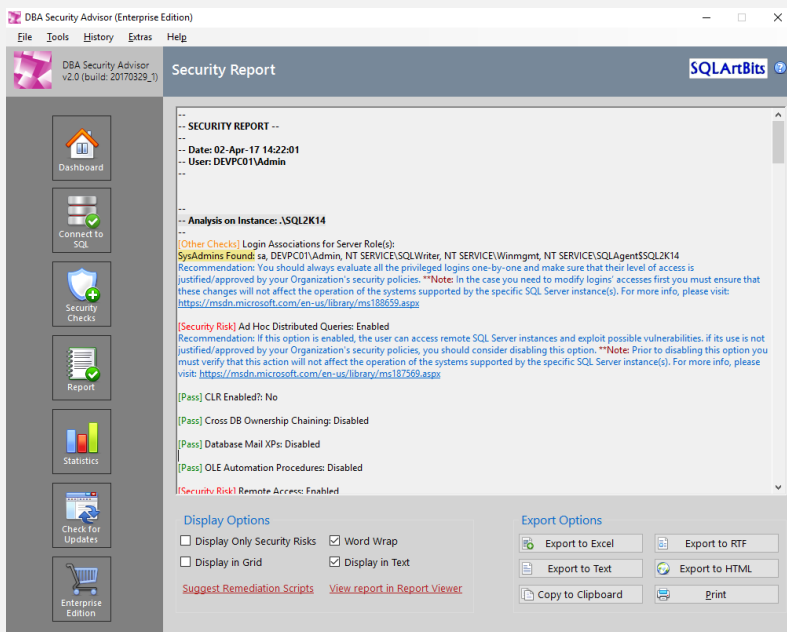


Figure 3: The Report Page (Embedded Report Viewer).

The Report Page contains an embedded report viewer which presents the findings of all the selected security checks that ran against the connected instances.

The security assessment findings are marked using the below flags, each flag with a different color:

- [Pass]
- [Security Risk]
- [Other Checks]

The security checks that are marked with the flag [Pass] or [Security Risk] are scored checks.

The checks that are marked as [Other Checks] can be informational checks or general best practices checks and recommendations.

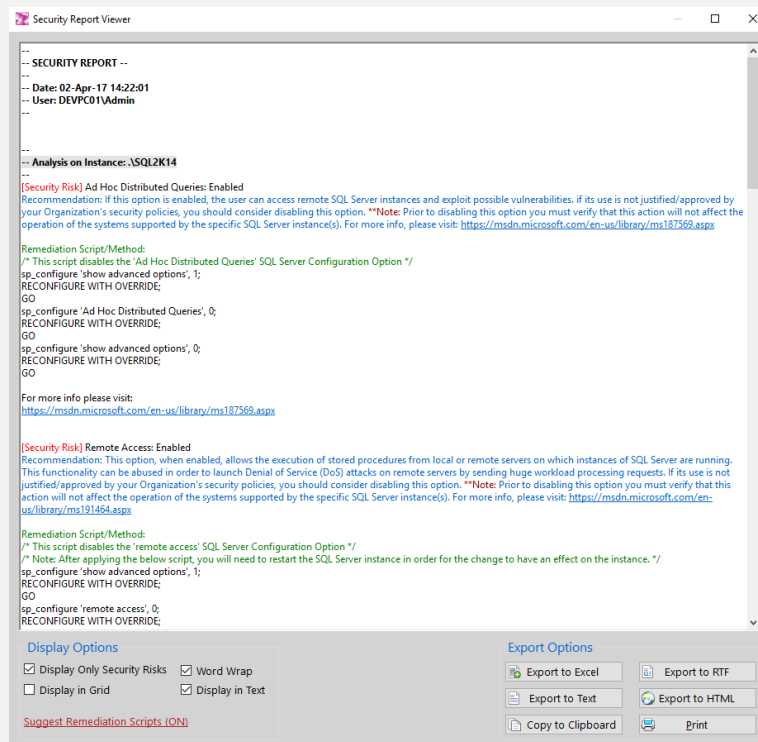


Figure 4: Standalone Security Report Viewer.

Security Report Viewer is another feature of DBA Security Advisor's Enterprise Edition. In Security Report Viewer you can view the security report in full detail, including recommendations and remediation scripts. Additionally, it is used for displaying older reports via the Report History mechanism.

Available Editions and Feature Comparison

DBA Security Advisor comes in two editions:

- The **Community Edition** which is free but has limited functionality.
- The **Enterprise Edition** where all features are available.

The below table compares the two DBA Security Advisor Editions.

Feature	Community Edition	Enterprise Edition
<p>7 Categories with more than 30 Security Checks:</p> <ul style="list-style-type: none"> • Server-Level Accesses: <ul style="list-style-type: none"> ○ Logins – Server Role Associations • Surface Area: <ul style="list-style-type: none"> ○ Ad Hoc Distributed Queries ○ CLR Enabled ○ Cross DB Ownership Chaining ○ Database Mail XPs ○ Ole Automation Procedures ○ Remote Access ○ Remote Admin Connections ○ Scan for Startup Procs ○ SQL Mail XPs ○ Trustworthy ○ SA Account Status ○ xp_cmdshell • Authentication & Authorization <ul style="list-style-type: none"> ○ Server Authentication Mode ○ Guest User ○ Orphaned Users ○ Public Database Role ○ SA Account Check • Password Policies <ul style="list-style-type: none"> ○ Password Expiration ○ Password Policy ○ Checks for SA (password expiration and policy) • Auditing <ul style="list-style-type: none"> ○ Login Auditing Setting ○ Default Trace Enabled Setting ○ Today's List of Failed Logins ○ Last Password Changes • Miscellaneous <ul style="list-style-type: none"> ○ CLR Assembly Permission Set ○ Transparent Data Encryption ○ SQL Server® Version ○ Service Pack Info • Advanced <ul style="list-style-type: none"> ○ Database Engine Service Account ○ SQL Agent Service Account ○ Credentials Check (sa:sa) ○ Credentials Check (user:user) ○ Latest DB Backup Times ○ BUILTIN\Administrators Access 	<p>Only the Following Security Check Categories are Available:</p> <ul style="list-style-type: none"> • Server-Level Accesses • Surface Area • Authentication and Authorization • Password Policies 	<p>All Security Check Categories are Available:</p> <ul style="list-style-type: none"> • Server-Level Accesses • Surface Area • Authentication and Authorization • Password Policies • Auditing • Miscellaneous • Advanced
Scan Single SQL Server® Instance	●	●
Scan Multiple SQL Server® Instances		●

Generate Security Report	●	●
Generate Recommendations for Security Risks		●
Generate Remediation Scripts for Security Risks		●
Security Report Display Options: Display Only Security Risks	●	●
Security Report Display Options: Word Wrap	●	●
Security Report Display Options: Display in Grid	●	●
Security Report Display Options: Display in Text	●	●
Security Report Display Options: Suggest Remediation Scripts		●
Security Report Display Options: View Report in Report Viewer		●
Security Report Export Options: Export to Excel		●
*Note: You need to have Microsoft® Excel® 2010 or later installed on the same PC on which DBA Security advisor is installed in order to be able to export to Excel.		
Security Report Export Options: Export to RTF		●
Security Report Export Options: Export to Text		●
Security Report Export Options: Export to HTML		●
Security Report Export Options: Copy to Clipboard	●	●
Security Report Export Options: Print	●	●
Program Customizations		●
Program Options		●
Report History		●
Informative Report On Connected Instance(s)	●	●
Connected Instances History	●	●

Table 1: Features Comparison of DBA Security Advisor's Editions.

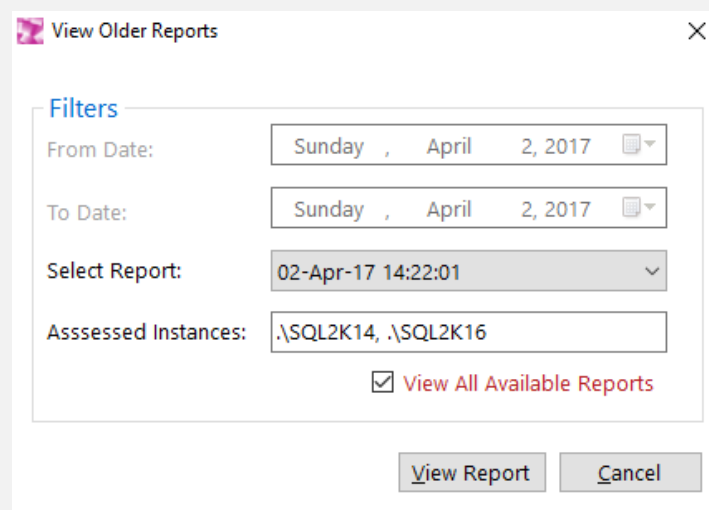


Figure 5: Older Report Selection Dialog.

* DBA Security Advisor Supports SQL Server® 2005 or later.